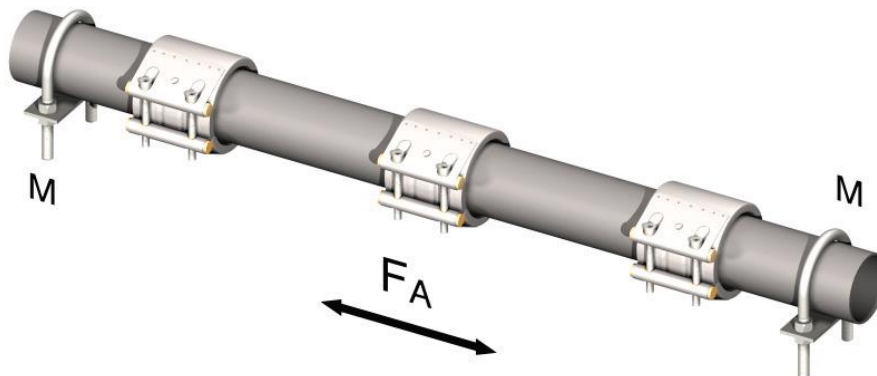


■ INSTALLATION TO TWO PIPES (FLEX)

THE PROBLEM IN PIPE LINE



BORFLEX SOLUTION -FLEX

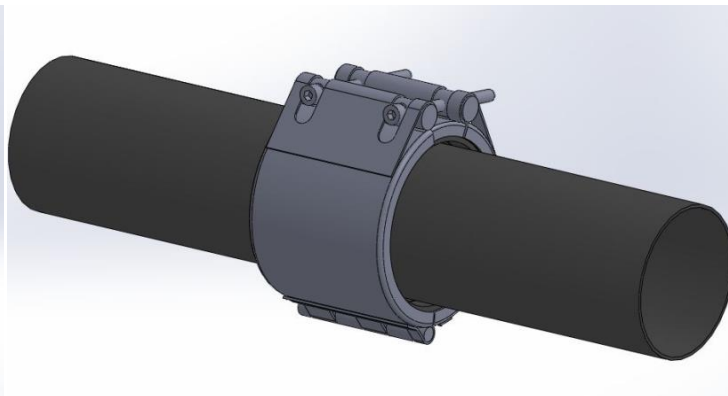
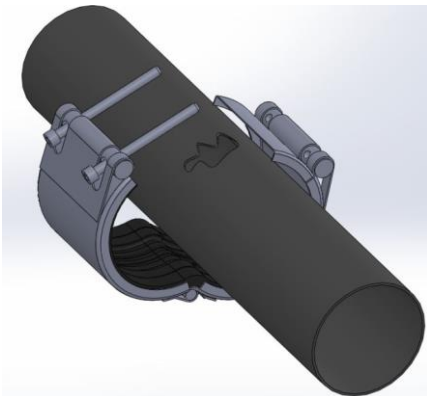


■ DAMAGE REPAIR ON PIPE (REP)

THE PROBLEM IN PIPE LINE

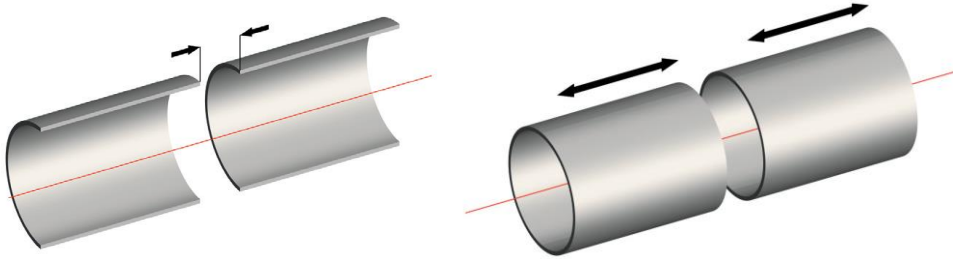


BORFLEX SOLUTION (REP)-REPAIR COUPLING



■ HORIZONTAL AXIS MOVEMENT ON PIPE

THE PROBLEM IN PIPE LINE



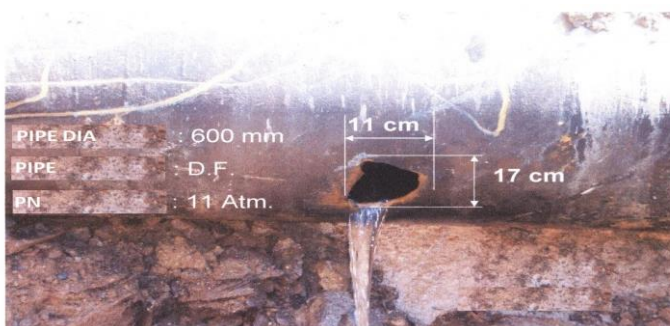
BORFLEX SOLUTION -GRIP



GRIP COUPLINGS DON'T MOVEMENT ON PIPES. ANCHORING RINGS ARE TIGHTLY MOUNTED PIPES. MATERIAL IS 301 SS

ANCHORING RINGS

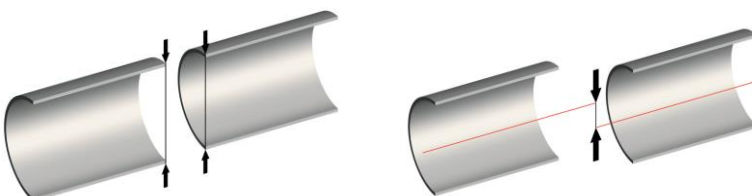
THE PROBLEM IN PIPE LINE - WIDTH DAMAGE



BORFLEX SOLUTION -WIDTH COUPLING



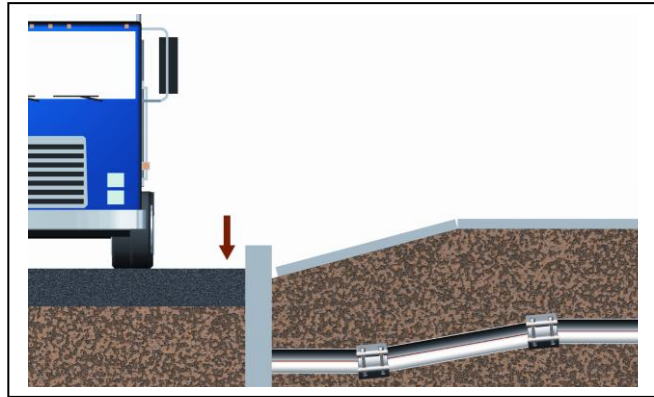
■ VERTICAL AXIS MOVEMENT ON PIPE



IN THIS SITUATION ; USE TWO GRIP COUPLING INTERMITTENTLY ON PIPE.

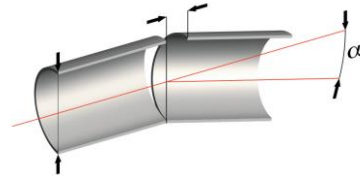
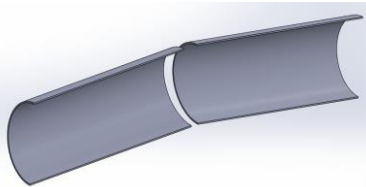
THIS COUPLINGS ARE TOLERATION 15 mm VERTICAL MOVEMENT.

BORFLEX SOLUTION -GRIP



■ ANGULAR MOVEMENT ON PIPE

THE PROBLEM IN PIPE LINE



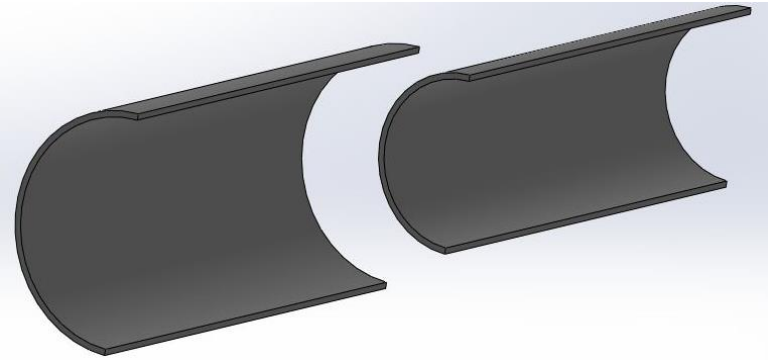
BORFLEX SOLUTION



As we informed as above, again ground movement or the pipes where they will be joined with angle on, the coupling can be made installation with 5° until DN300, 3° for between DN300-1000, 2° for above DN1000. Grip type coupling until DN600mm can be easily used for this kind of connections with angle ANGLE IN ELONGATION AND SHORTENING POSITIONS WHILE CLAMP IS CONNECTED TO TWO PIPES.

DIAMETER DIFFERENCES ON PIPES

THE PROBLEM IN PIPE LINE



PIPE DIAMETER DIFFERENCE MAY BE
MAX. 30 mm

THIS CAN BE DIFFERENT MATERIAL
PIPES.

FOR EXA. : GRP,DF ,STEEL,HDPE etc:

BORFLEX SOLUTION



BORSTEP - INSTALLATION

COUPLING OF TWO DIFFERENT
DIAMETERS.

BORFLEX MONTAGE INFO



PLEASE TIGHTEN COUPLING BOLTS BY THE TORQUE
WRENCH AND WITH TORQUE VALUE ON LABEL.

MAY BE BOLT'S TORQUE VALUE ARE EQUAL.